

Serene Steam[®]

HOME SPA

INSTALLATION MANUAL - REVIVE



Please read this install manual in detail



**SERENE STEAM
ICC-ES Evaluated**



BEFORE YOU BEGIN

PLEASE READ

Please follow detailed instructions in this installation manual for correct location and placement of the system including all installation instructions.

Make sure that you install Serene Steam so that the steam system and bench can be opposite each other, & placed in the horizontal center of your wall as shown in the “**CORRECT**” image. Installation must result in the steam system directly facing the user while sitting on the bench during use.



Serene Steam must **never** be installed above a built-in shower bench or a side wall as shown in the “**incorrect**” image.



Important Notes Before You Begin

Please Read

All Serene Steam components displayed in this manual may appear slightly different from your system ordered.

This may be due to product upgrades and/or enhancements, and are subject to change without notice.

Additional Parts Required For Installation

You will require several, general off-the-shelf plumbing parts for the installation which are not supplied, nor listed in this manual. These unknown parts may depend on several factors such as water tubing/pipe sizes etc. that your home uses, or perhaps you are remodeling, or have new construction.

Once your licensed plumber begins the installation process, he/she should know exactly which parts, or attachments to adapt to the Serene Steam system without difficulty.

Any additional parts required which are not listed in this manual should typically be basic, and off-the-shelf.

ALWAYS USE CERTIFIED PLUMBING PARTS WITH SERENE STEAM

The following “Off the Shelf” parts are required, and not supplied with a Serene Steam purchase.



Shark-bite fittings,
angles may vary



20 inch
1/2 fip x 3/8 comp
flex faucet supply



Shielded coupling



Sanitary Tee



ABS Pipe
Increaser/Reducer



ABS pipe approx.
4-6 feet



RedGard, or alike
is recommended
for water-proofing

Additional unknown plumbing components may be required for your specific shower enclosure.

PLEASE READ

ESSENTIAL REQUIREMENTS

before installing Serene Steam

Your water heater



Set your water heater to 140 F for best results.

Your shower water pressure



Set your household water pressure to:

at least **65 PSI**

(Considered standard)

Your shower enclosure must be sealed and adapted correctly for steam use

All materials and content in this installation manual are the sole property of Serene Steam, and are protected under United States and/or International copyright and other intellectual property laws.

All content described, opinionated, or implied within this manual are subject to change without notice.

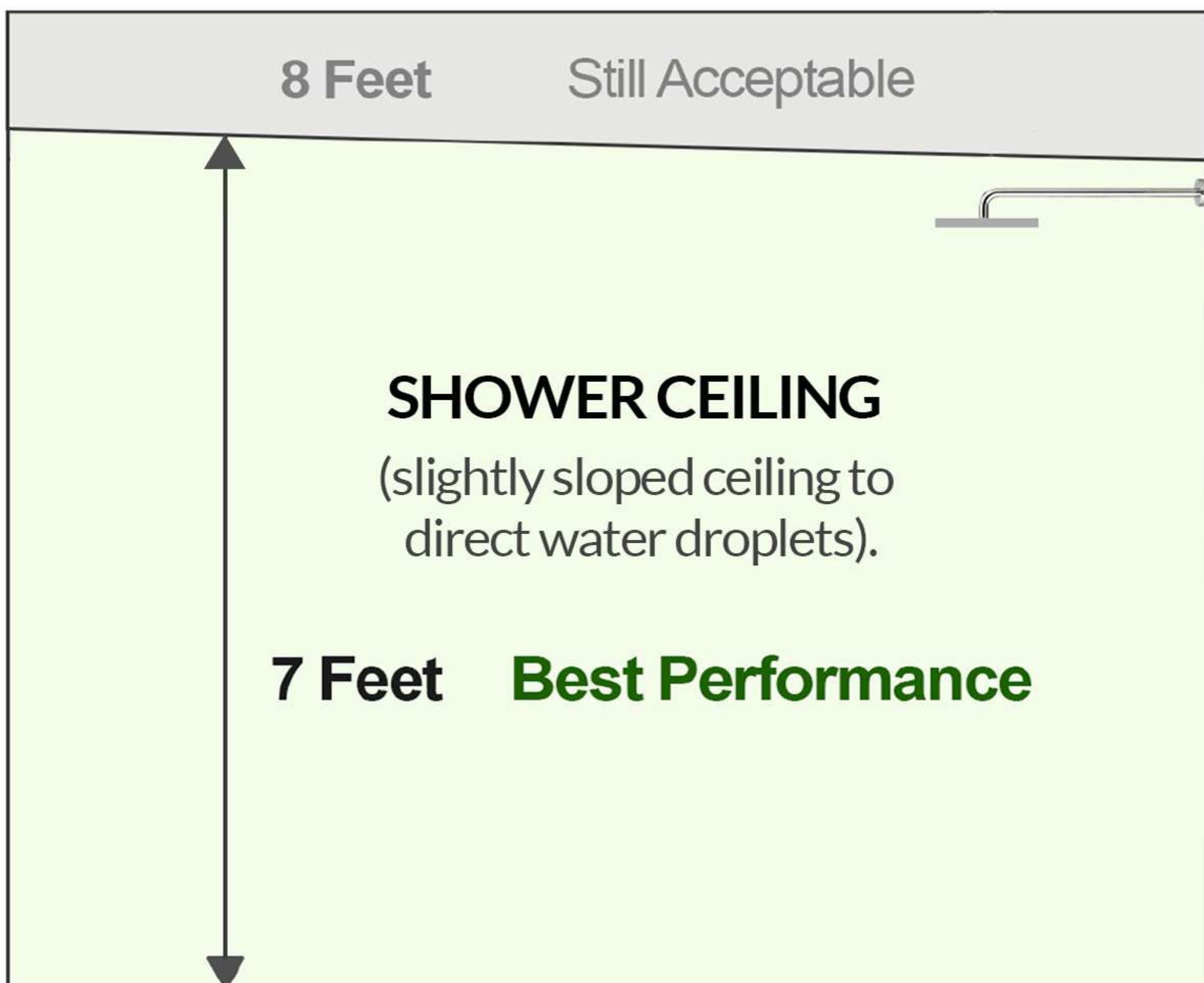
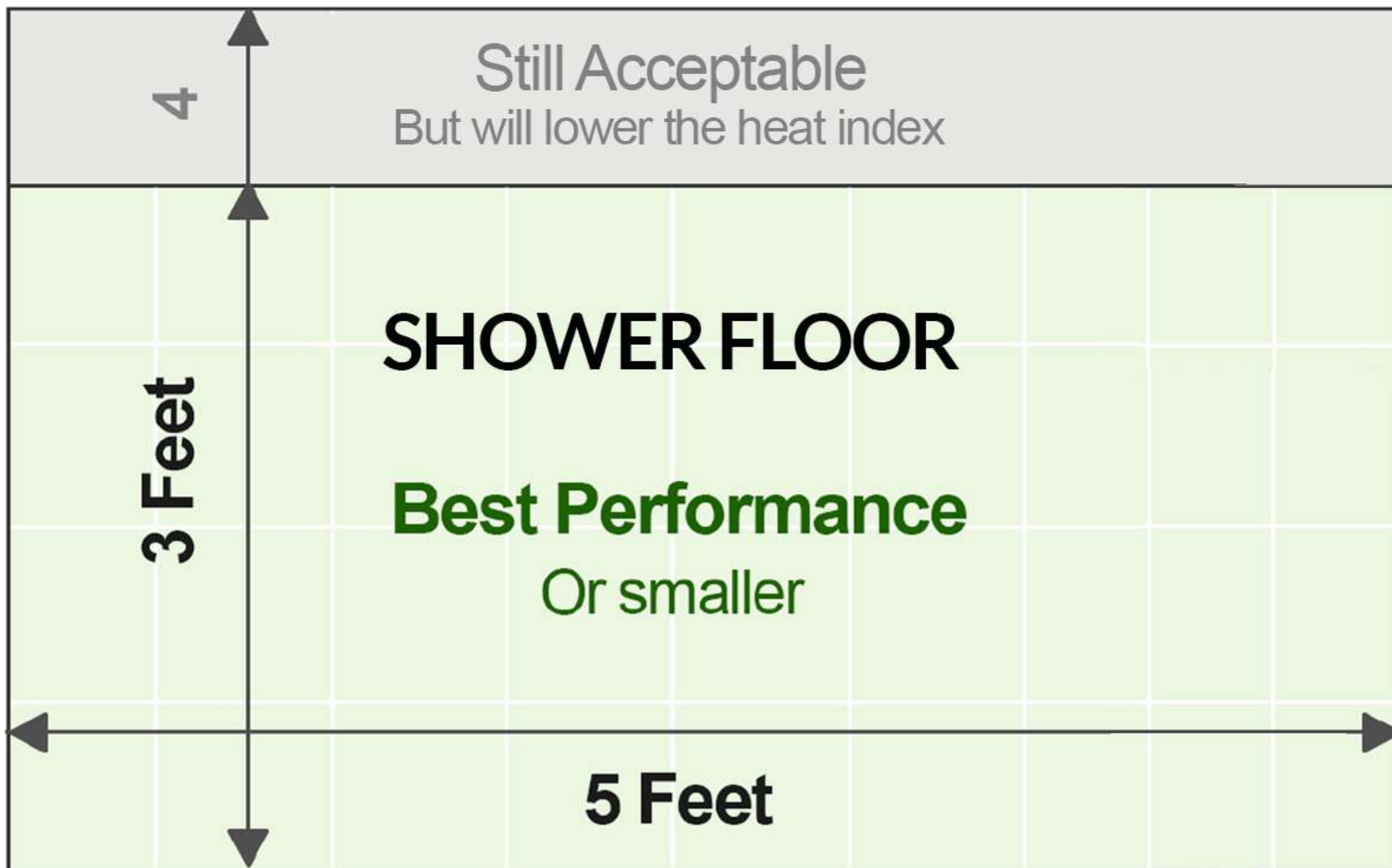
Serene Steam is a registered trademark.

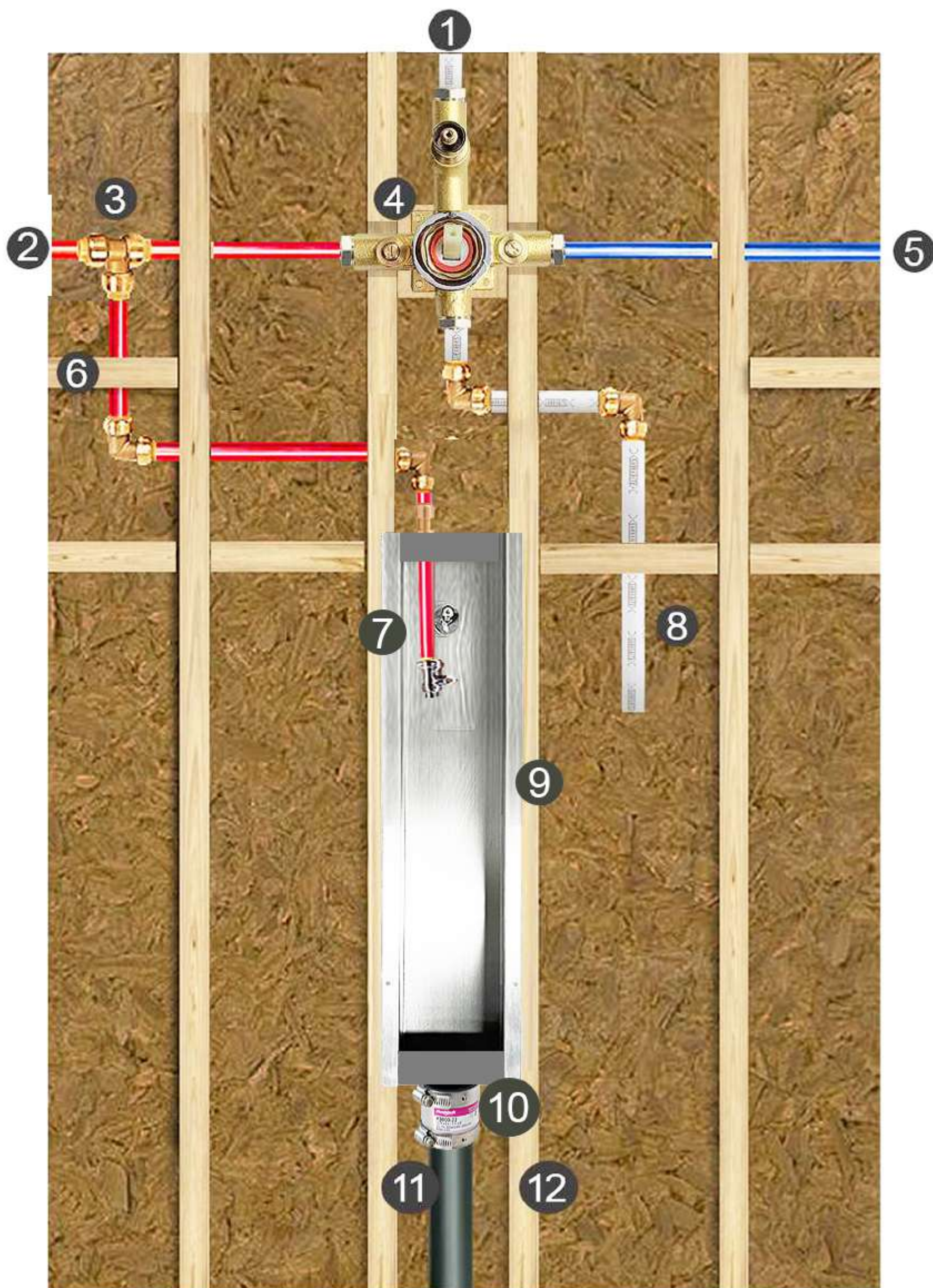
Copyright © Serene Steam - All Rights Reserved

United States and International patents granted and/or pending.

For best results, please read

The following descriptions below are the requirements for your shower size prior to installing Serene Steam.





A quick reference of the Installation process.

The step-by-step install process begins on the next page and must be followed in great detail.

- ① Water line to your shower head (shower head not included)
- ② Main hot water line
- ③ Tee connection on your hot water line flowing to the mixing valve as well as to the Serene Steam rough-in
- ④ The hot & cold shower mixing valve
- ⑤ Your cold water line
- ⑥ Hot water line extension to Serene Steam rough-in
- ⑦ Connection point which will connect Serene Steam unit at completion
- ⑧ Water line to hand held shower/wand (hand held parts not included)
- ⑨ Rough-in fastened firmly between two studs
- ⑩ Shielded coupling connecting the rough-in to the drainage system
- ⑪ Black ABS pipe, part of your new drainage system
- ⑫ Your main verticle studs to support the rough-in **(MUST be created)**

Please begin your installation as follows



This is the **MOST IMPORTANT** step

STEP 1

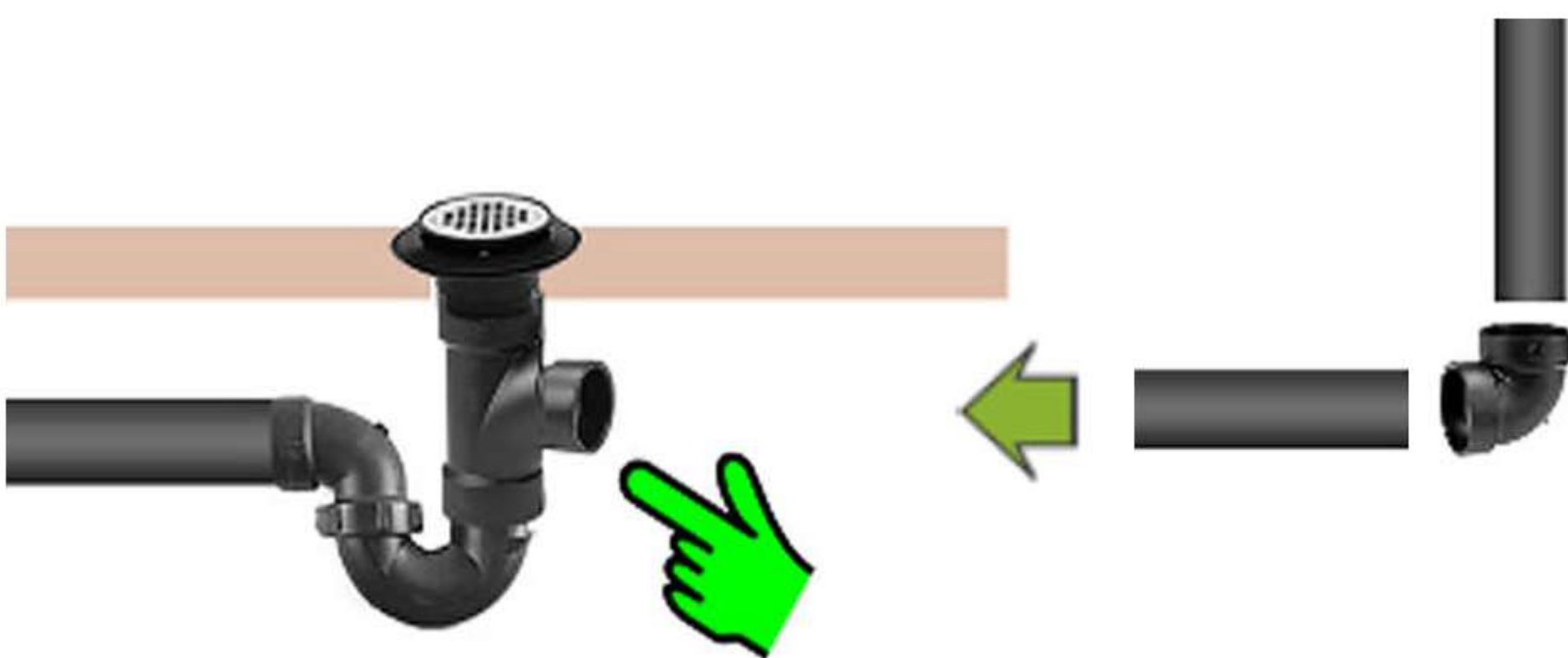


A-BEFORE Installation image

Whether you are remodeling or a new construction, this image displays a typical drainage configuration underneath your shower floor.



Now add a sanitary tee as shown between the P-Trap and shower drain. Use the correct size fitting for your pipe. Serene Steam rough-in will require a **1-1/2 inch connection**. Now you have access to the tee which will connect to the Serene Steam rough-in.



Once the tee is in place, you will insert an amount of ABS pipe as shown (**at least 3 feet for now**), so that it can reach the Serene Steam rough-in drain connection later. In this process, you are simply creating a pipe structure so that it can connect to the drain section of the rough-in.

Once this vertical pipe connection is in place, its correct location should be in the horizontal center of your shower enclosure as required, and noted on the next page.

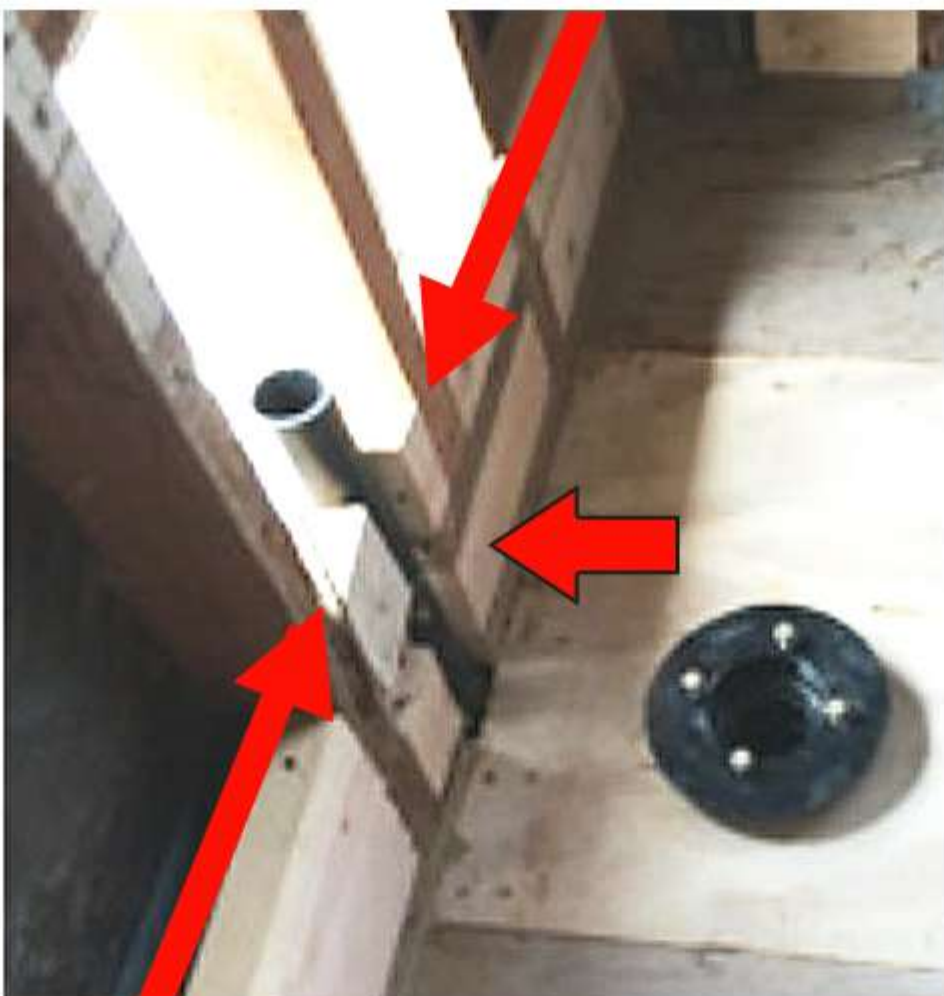
Drain assembly continued

THIS IS HOW YOUR PIPE STRUCTURE SHOULD NOW APPEAR

Please note: make sure that you initially run at least 4 feet of pipe for the vertical section as it will need to reach the rough-in later. It can be trimmed later to the correct height.



Here are real-life images below for reference



This actual installation image displays the completed drain assembly which is connected to your drain using the tee, and located under the shower floor as described earlier.

Please note

This vertical pipe structure should now appear in the *horizontal center* of your shower as shown.



This actual installation image shows the sanitary tee connected to the P-Trap and drain underneath the shower floor. This is how your drain should now appear.

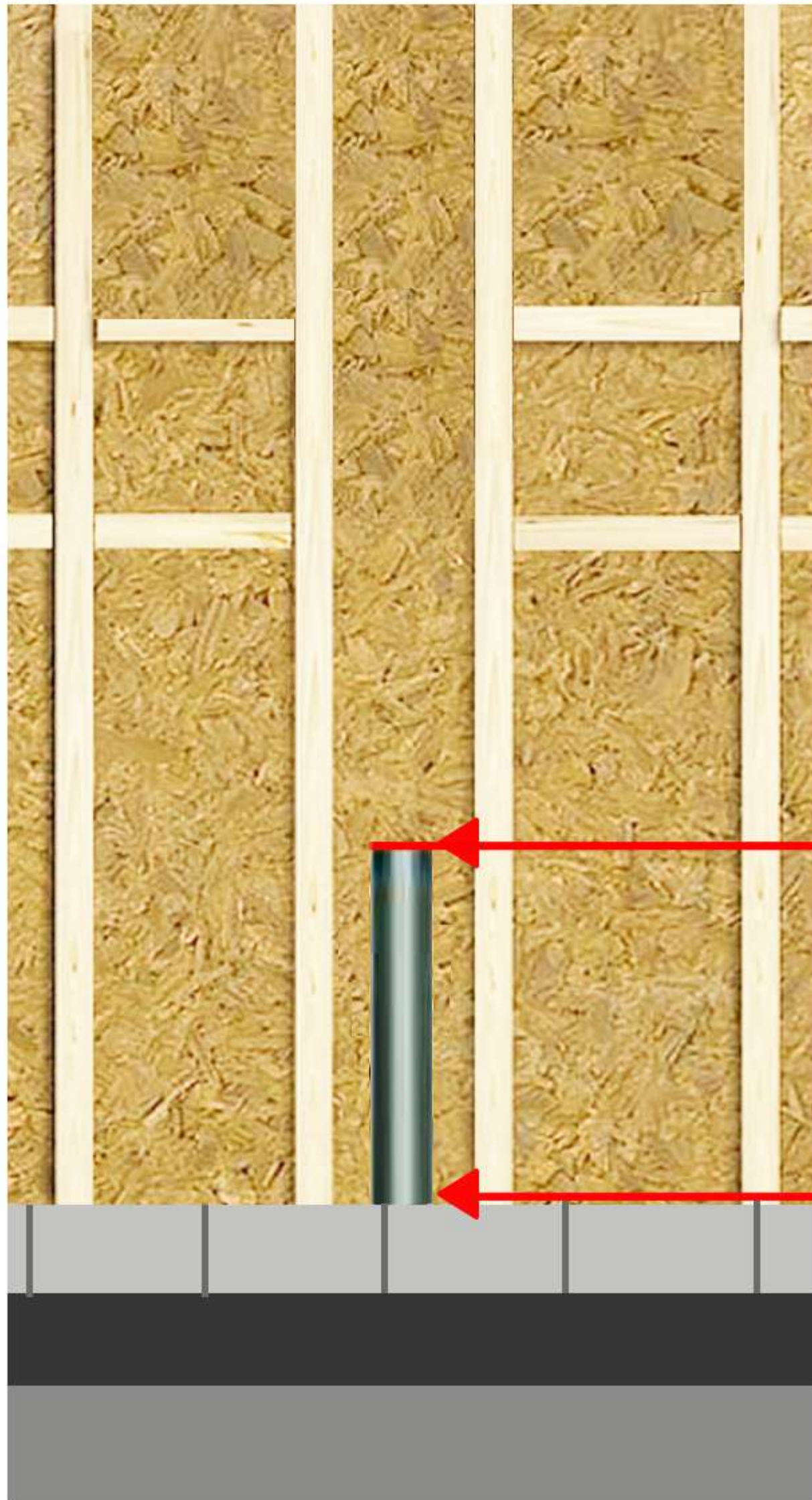
Drain assembly completion

HERE IS A SAMPLE OF HOW YOUR SHOWER MUST APPEAR



PLEASE PAY CLOSE ATTENTION

The ABS drain extension



12 inches higher than
your completed tiled floor.
(As close as possible is ok)

- ← Tiled floor
- ← Hot mop
- ← Concrete

ABS drain extension Final Height

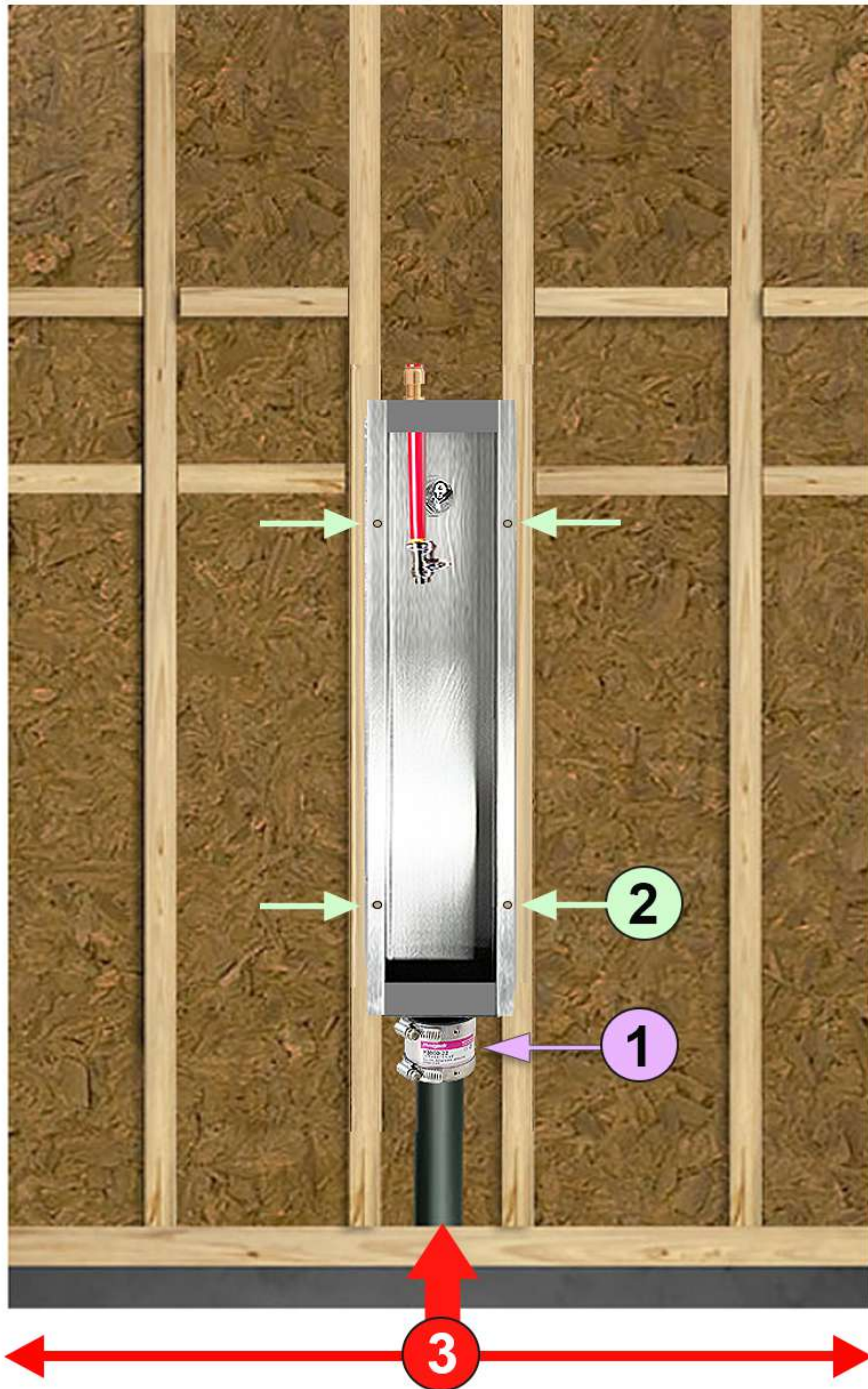
The final ABS drain height must be calculated at **12 inches above** your anticipated floor height after adding your floor concrete, hot mop and tile, then your **12 inch** measurement should be calculated from the top of your completed tiled floor as illustrated above. **Please achieve this as close as possible.**

Attaching the rough-in

STEP 2

You will be installing the rough-in by mounting it firmly onto your new drain extension, and between the new center studs as shown.

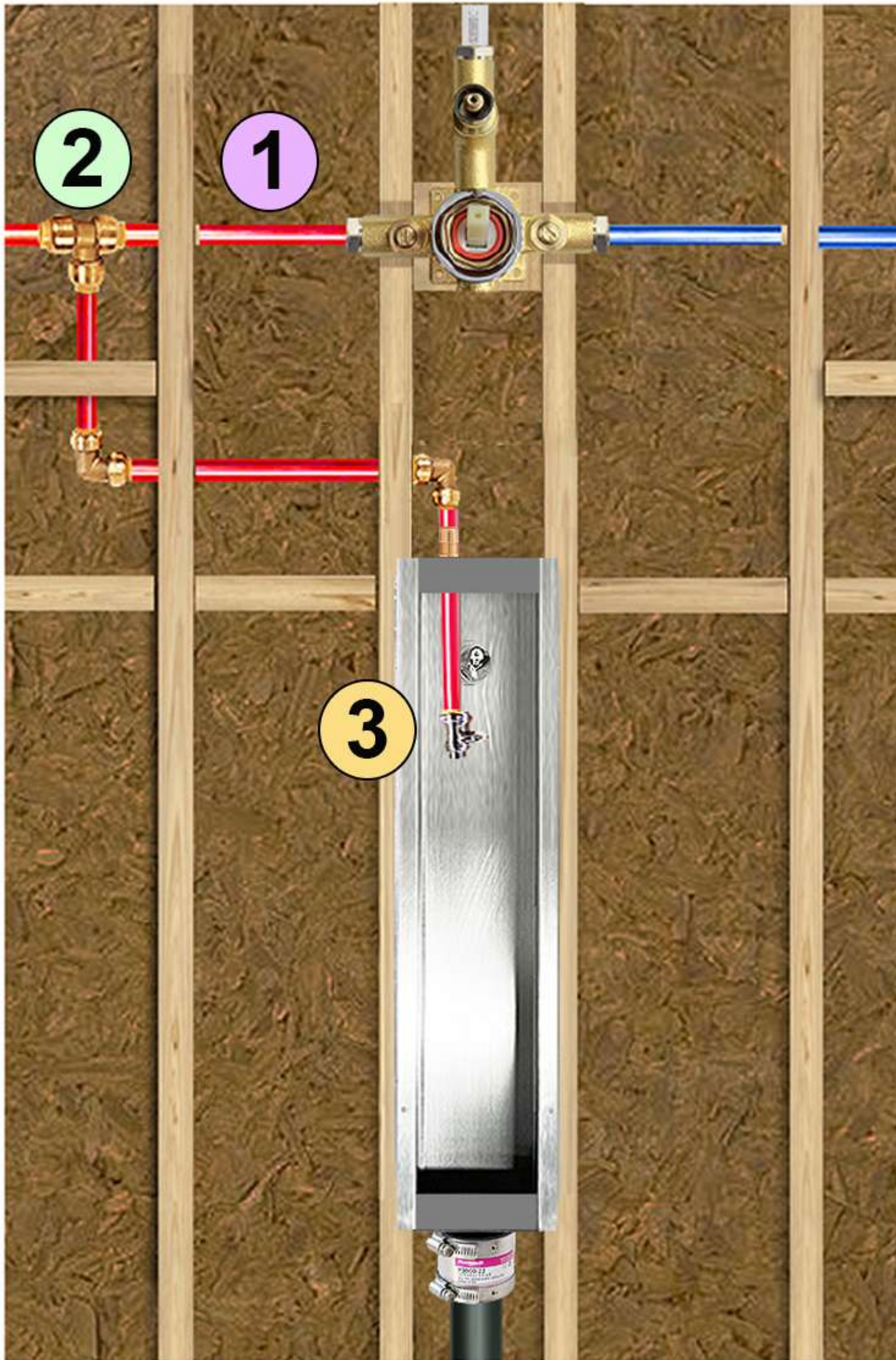
Position your studs correctly with a distance between them so that they will support the flange of the rough-in as shown. The rough-in will now sit flush between your studs. The rough-in has a depth of 3 - 3/4 inches.



Please follow the color coded reference for this step

- 1 Attach, and secure the shielded rubber coupling between the bottom section of the rough-in and ABS drain pipe as shown. **Remember:** Your ABS drain will now extend **12 inches** vertically above your **anticipated height of your COMPLETED** shower floor. **Before** attaching the rough-in, double check that the ABS drain pipe is measured to the correct height as described earlier.
- 2 Mount the rough-in firmly into the shielded coupling, and onto the supporting studs with stainless screws.
- 3 **Make sure** that your drain extension was installed correctly in the horizontal center of your shower wall as described earlier.

Connecting the hot water line to the rough-in



STEP 3

Insert a **Tee - connector** on your hot water line so that the extension of the Tee-joint can also connect to the water connection of the the rough-in as shown.

Now connect the rough-in to the shared hot water line created by inserting the Tee-joint.

1 Your hot water line

The hot water inlet temperature is not to be greater than 60 ± 2 °C (140 ± 3 °F), If necessary, install a certified ASSE 1070 temperature limiting device on the water inlet line.

2 Tee connector

3 Rough-in shut-off valve & hot water connection to the Serene Steam trim.

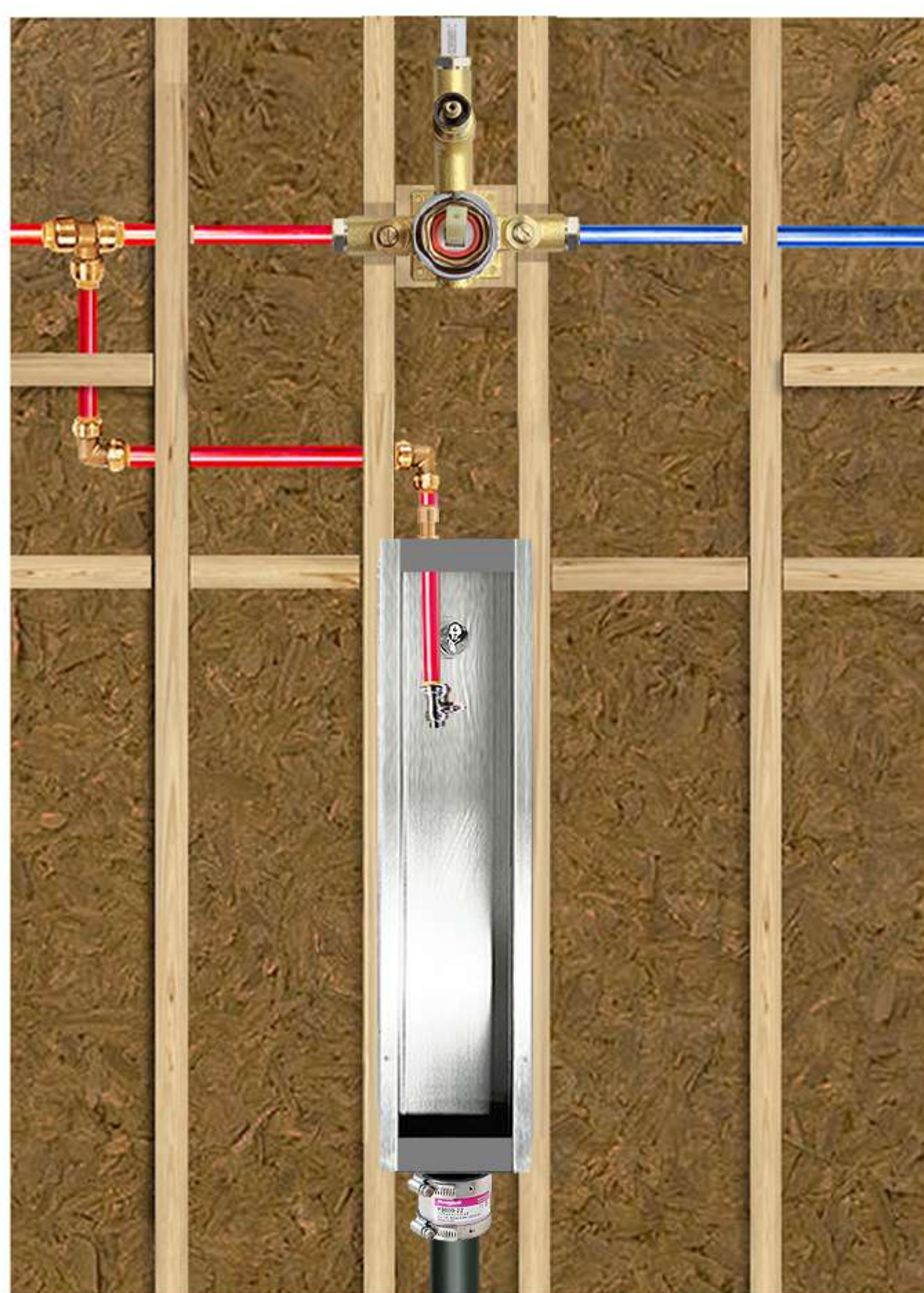
This step completes the installation process inside your wall for Serene Steam. Unless you have further unrelated steps to complete, the shower wall should now be ready to continue with your own construction.

Note: Please make sure, as with any installation, that your existing mixing valve always opens with cold water first for your regular shower use.

Closing and completing your shower wall

If all looks good, and you don't have any unrelated construction steps, you may now complete your shower wall. Images below are an accurate **example** of closing your wall with your rough-in now in place. Your materials may differ slightly.

BEFORE EXAMPLE



AFTER EXAMPLE



Test plumbing for possible leaks before closing

Details for closing your wall are continued on next page.

Closing and completing your shower wall

Before continuing with “Step 4” on the next page, please take a moment to understand the correct method for closing your shower wall with the rough-in correctly secured and connected.

1

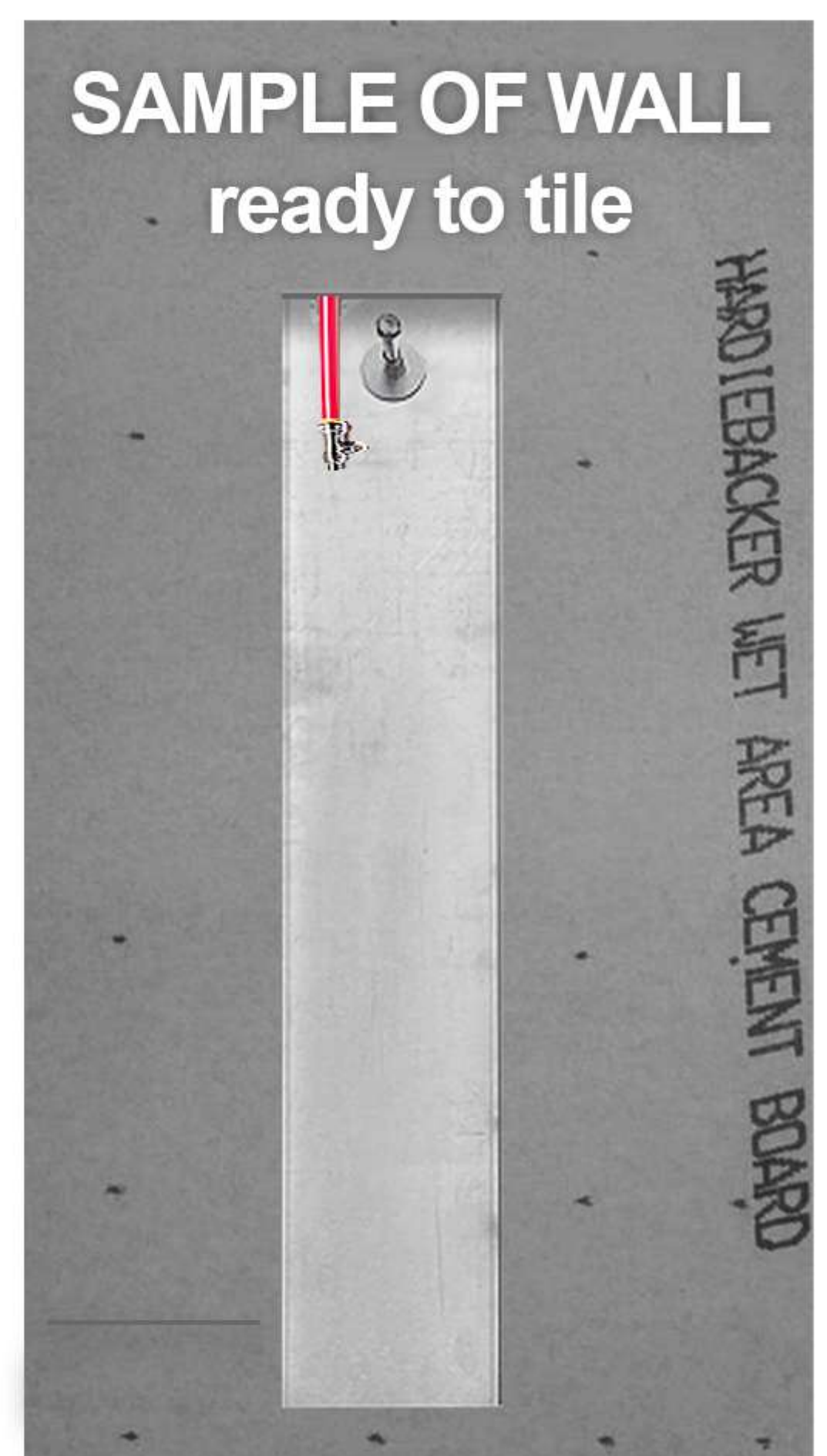
The **black** arrows represent the front surfaces (flanges) of the rough-in where you are required to **tile over**.

The **green** arrows represent an area of the rough-in surface which is a support guide that should prevent you from tiling too far over the correct surface.



2

Make sure that you extend your wall materials (board, concrete, tile etc.) OVER THE FLANGES of the rough-in as shown in this sample diagram here, but do not go over any open area of the rough-in or your trim may not fit.



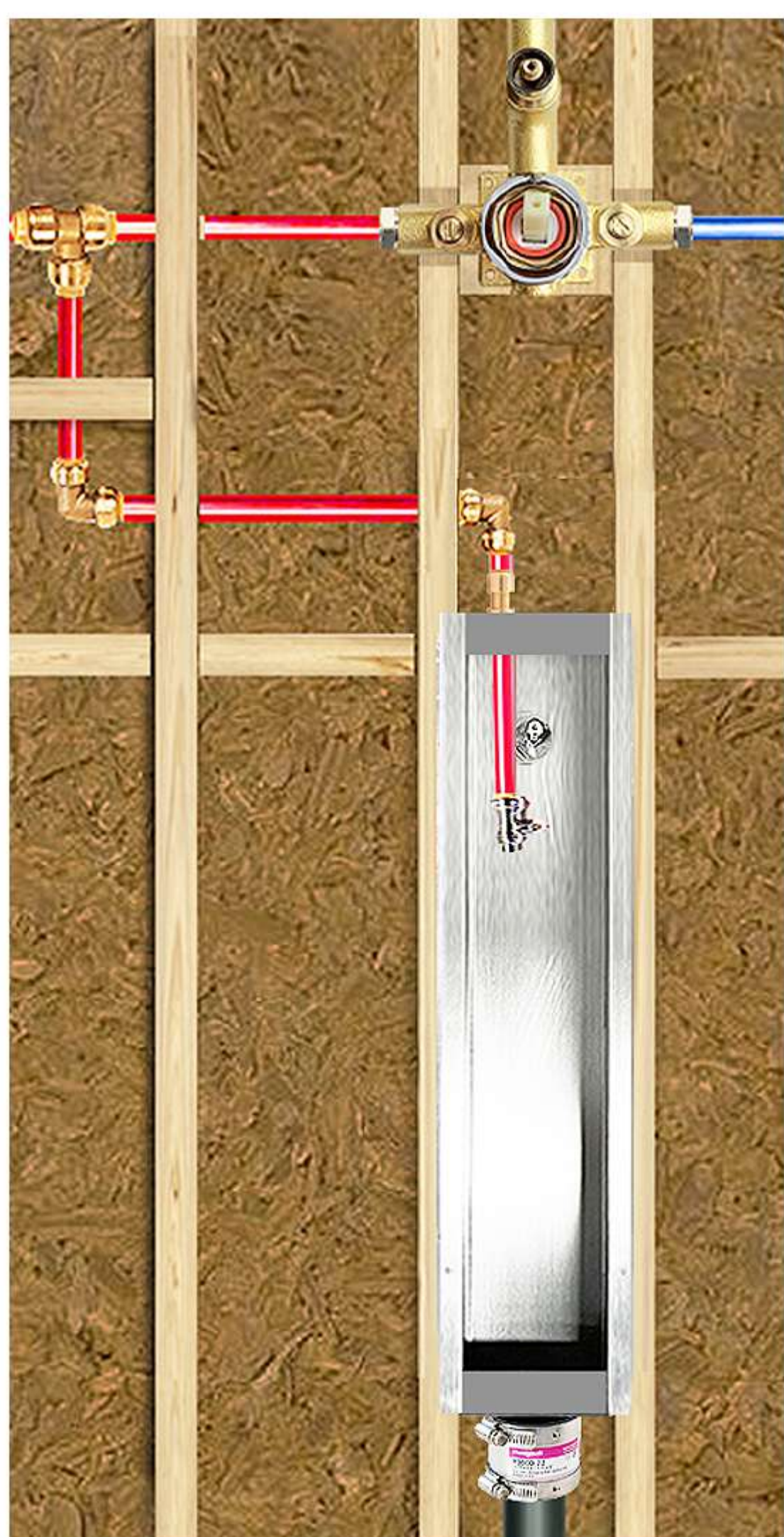
Closing and completing your shower wall

STEP 4

Close your wall with all materials over the **flanges** around the rough-in as described earlier so that **only the opening** of the rough-in is exposed. This ensures the trim to fit snugly inside the rough-in at the completion of your construction as shown.

The following diagrams below illustrate an example of all your plumbing complete, tested for any leaks and ready to close, and complete your wall.

BEFORE



AFTER



The back channel of the trim will now fit inside the rough-in.



Closing and completing your shower wall

It is important to waterproof all gaps that appear between the rough-in and your materials used to close your wall. The images below show the difference between the correct method and the incorrect method, please pay extra attention to this detail, as the correct method as illustrated in

VERY IMPORTANT

Water-proofing must never be skipped!



INCORRECT



Notice how the wall tile *has not* been correctly water-proofed yet, it is mandatory to seal this section correctly so that water **cannot** penetrate your materials between the rough-in and wall tile.

Materials shown here are exposed, and will leak if not properly sealed and water-proofed.



CORRECT



Use Liquid Nails - Fuze-It or RedGard, or a similar product to waterproof.

Notice how the wall tile **has** been correctly water-proofed leaving **no gaps** between the tile and rough-in. Waterproof around the entire rough-in part.

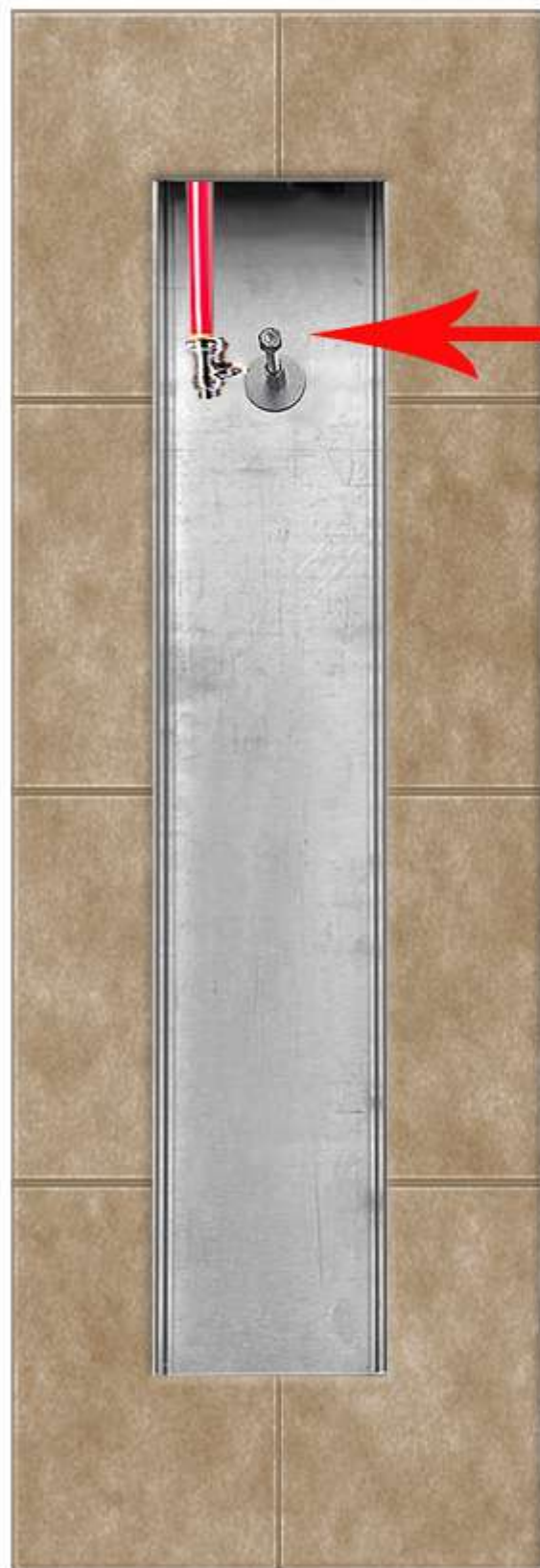


Make sure the water-proofing is not applied too thick as it may prevent the trim from being easily inserted inside the rough-in.

Connecting the system to the rough-in water line

STEP 5

FINAL STEPS ATTACHING THE SYSTEM



Before connecting the system, insert it inside the rough-in to make sure that everything fits correctly. Handle with care.

As shown here by the red arrow, the back of the system has an opening which will fit on top of the extruding bolt inside the rough-in so it can be secured.

The correct motion to insert the unit will be similar to hanging it over the bolt so that when you release the unit it should gently drop into place. **Go ahead and insert the unit now to check that it fits correctly.**



Adjust the nut attached to the bolt using a wrench to make sure that the opening at the back of the unit

fits securely when attached. The adjustment will depend on the thickness of your wall. Test the fitting a few times until the unit feels secure enough that it can't fall forward, but it's not necessary to be very tight, using silicone in the final stages will firmly secure the unit to the wall.

Connecting the system to the rough-in water line

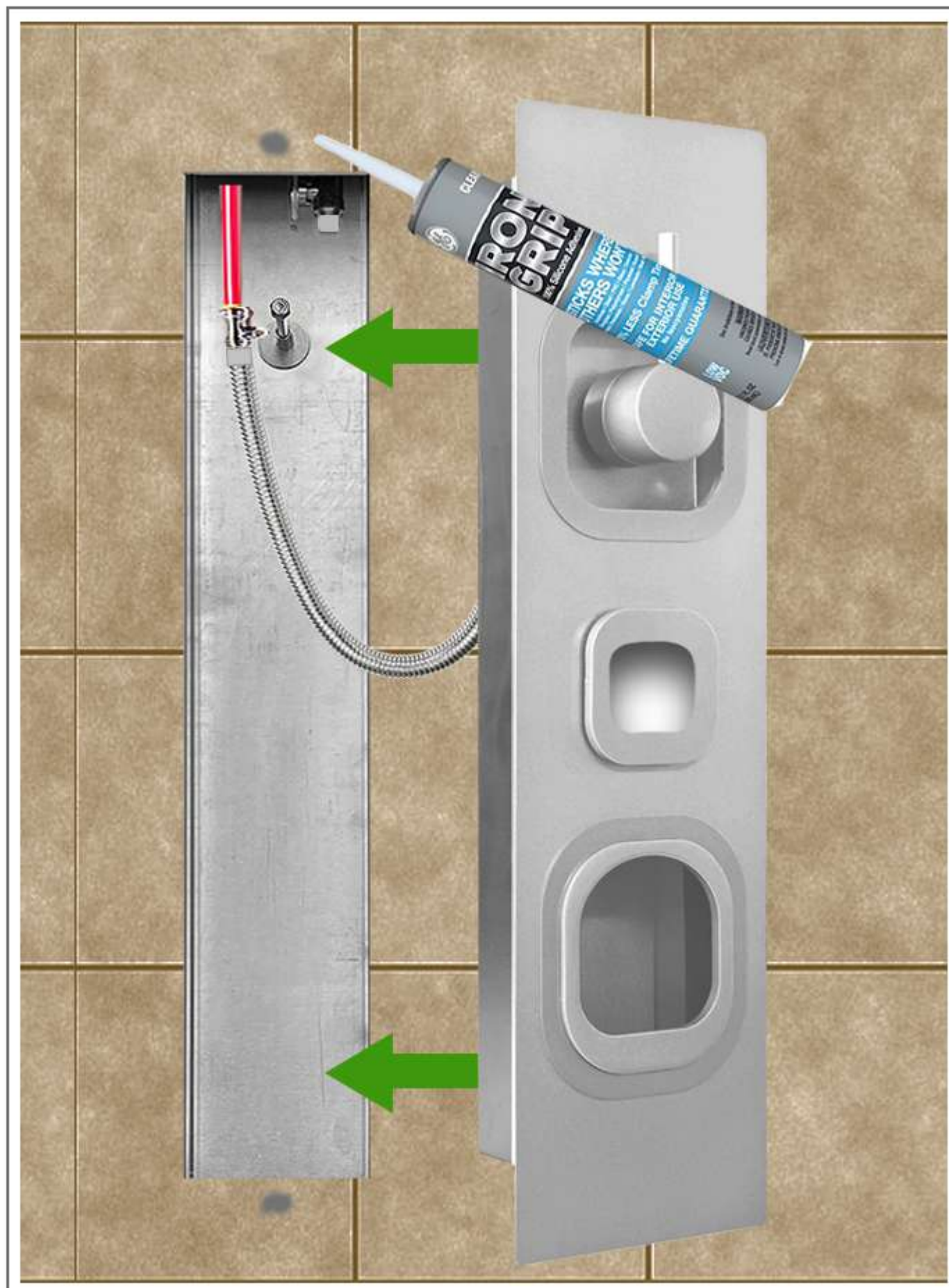
FINAL STEPS ATTACHING THE SYSTEM



Attach the 20" flex water line to the shut-off valve inside the rough-in.

Now attach the other end of the flex water line to the back of the Serene-Steam unit as shown.

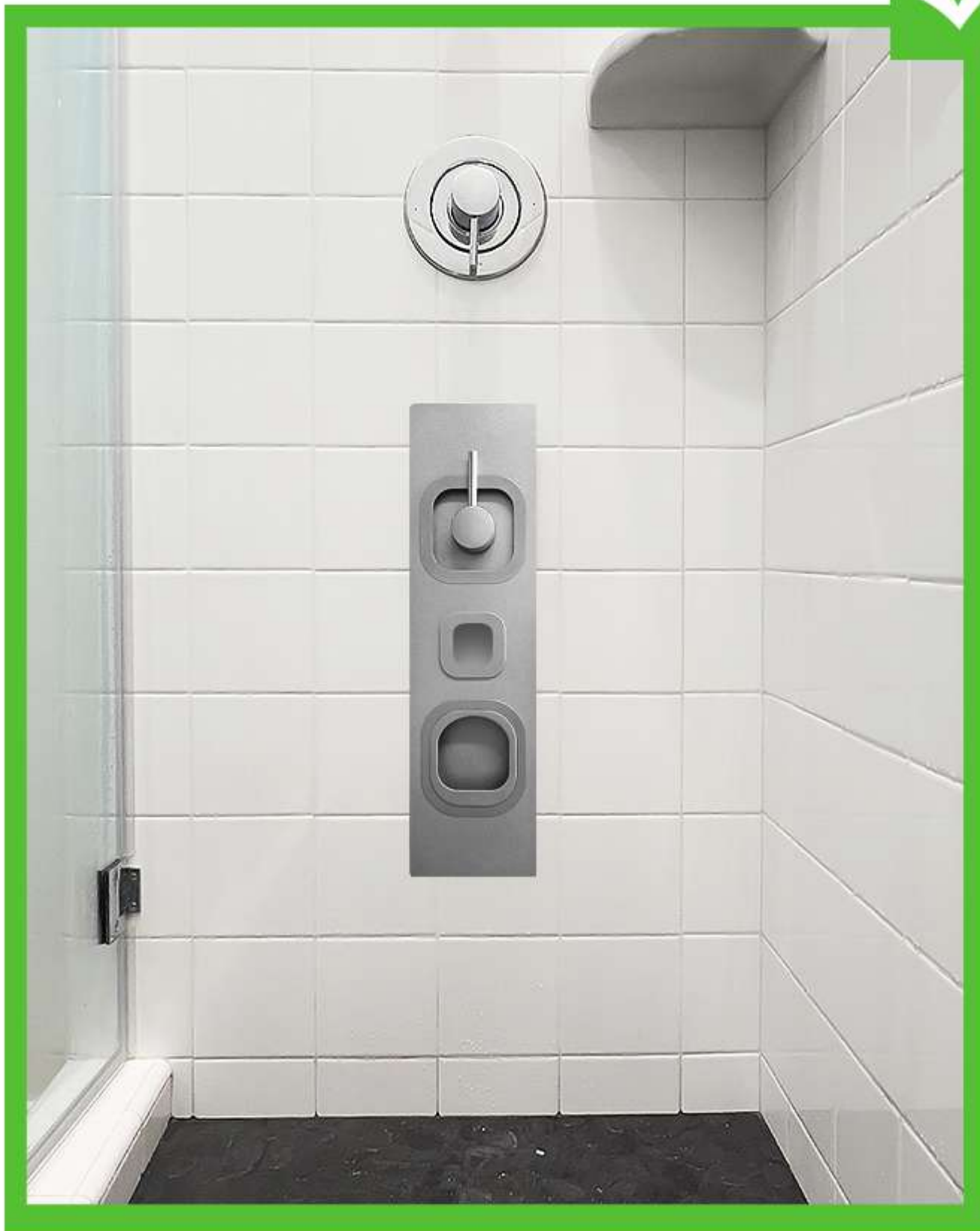
Tighten correctly to ensure that all water connections are water-tight and **open the shut-off valve.**



Apply a **VERY THIN** amount of silicone **only at the top & bottom** as shown, just enough to keep the trim firmly in place.

Excessive silicone will make it difficult to remove the system later for any reason. The correct water-proofing of the **rough-in** must provide the water-tight seal which is required to prevent water from entering your shower wall as described on page 14.

Installation is complete, you may test the system



General notes

Once the system is secured in place and is operational, it is normal for a “Run-Off” amount of water to flow from the back of the system into the rough-in drainage during use.

The “Run-Off is **NOT** visible during use.



It is **normal** to notice a small amount of water droplets forming around the steam/hot vapor exit flow during use.



Set your water heater to 140° F for best results.



Copyright © Serene Steam - All Rights Reserved

info@serenesteam.com - 1-877-783-2614

Version 4.0